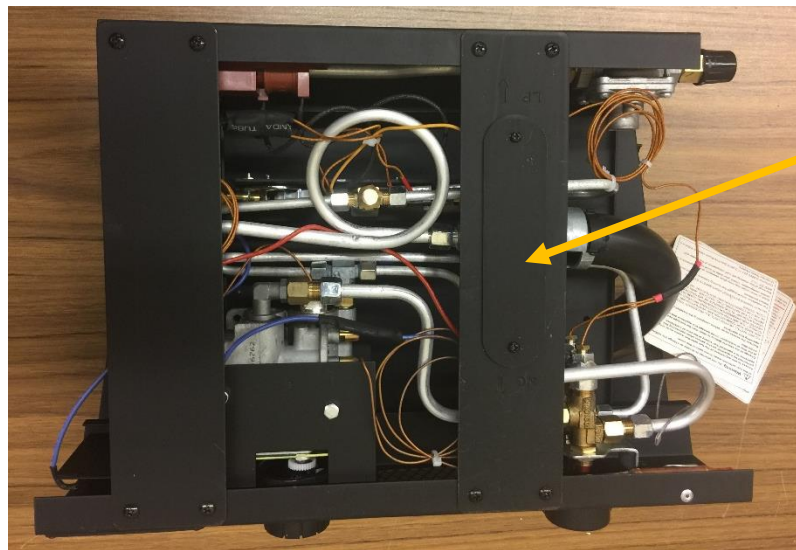


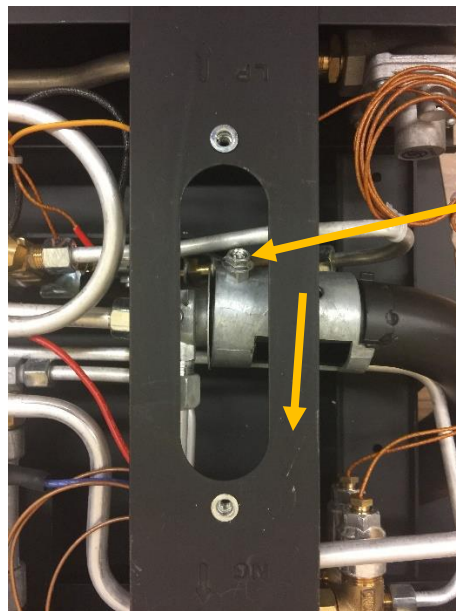
How to switch the Air Door from Propane to Natural Gas

Setting the Air Door to the appropriate gas type being supplied to the log set is important, as it improves the color and appearance of the flame. The Air Door is located on the bottom of the log set heater. So, you will need to flip it over. I recommend laying a cloth down so that the metal of the burner does not rub on the floor. You will want to look for an oval shaped cover that has two screws.



Air Door

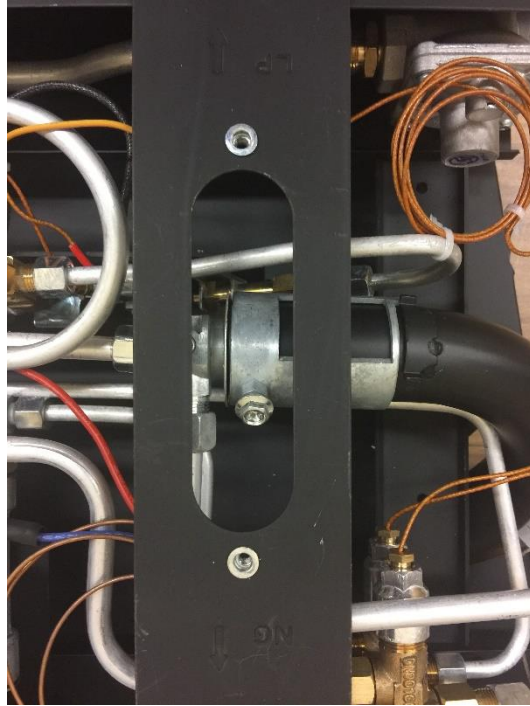
You will unscrew this door, revealing a silver cylinder shaped part that has a single screw. The unit comes preset for Propane, so at first, the screw will be facing towards LP (Liquid Propane).



Loosen this screw

Loosen this screw.

Then, with your screwdriver still contacting the screw, slide/rotate the cylinder towards the NG (Natural Gas) side until it cannot slide any further.



Once done, you will tighten the screw on the cylinder, then seal the air shutter cover again.

For more information please visit our website www.thermablaster.com. You can contact us at 877-670-8428 or via email service@thermablaster.com.